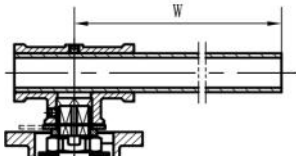
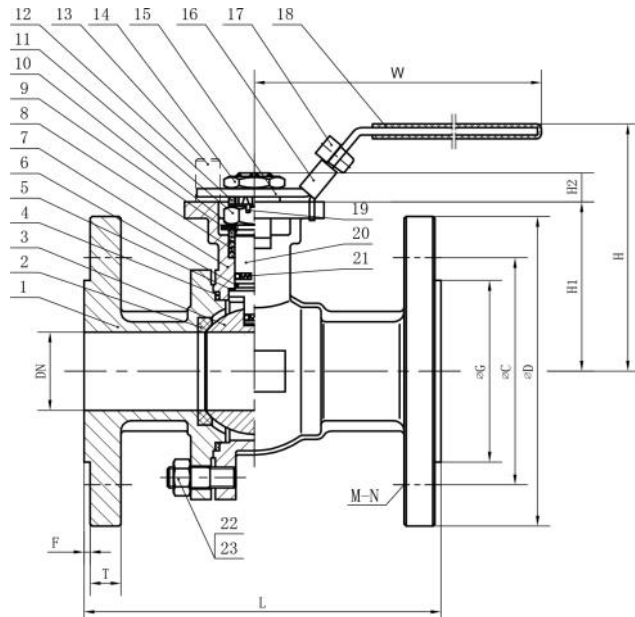
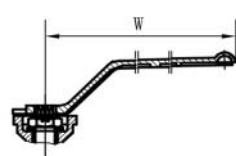


Size	D	C	G	T	L	W	N-M	ISO 5211	E	H	H1	H2	f
1/2"	3.74	2.62	1.38	0.56	6.50	6.30	4- 5/8"	F04/F05	11 mm	3.11	1.91	0.39	0.25
3/4"	4.61	3.25	1.69	0.63	7.48	6.30	4- 3/4"	F04/F05	11 mm	3.27	2.36	0.39	0.25
1"	4.88	3.50	2.01	0.69	8.50	7.28	4- 3/4"	F05/F07	14 mm	3.66	2.56	0.55	0.25
1 1/4"	5.24	3.88	2.52	0.81	9.02	7.28	4- 3/4"	F05/F07	14 mm	4.13	2.80	0.55	0.25
1 1/2"	6.14	4.51	2.87	0.88	9.49	9.84	4- 7/8"	F07/F10	17 mm	4.57	3.07	0.67	0.25
2"	6.50	5.00	3.62	1.00	11.50	9.84	8- 3/4"	F07/F10	17 mm	4.92	3.35	0.67	0.25
2 1/2"	7.48	5.87	4.13	1.13	12.99	12.20	8- 7/8"	F07/F10	19 mm	6.69	3.94	0.75	0.25
3"	8.27	6.61	5.00	1.25	14.02	12.20	8- 7/8"	F07/F10	19 mm	7.17	4.33	0.87	0.25
4"	10.75	8.50	6.18	1.50	17.01	19.69	8- 1"	F12/F14	22 mm	8.27	5.71	0.87	0.25
5"	12.99	10.49	7.32	1.75	20.00	27.56	8- 1 1/8"	F12/F14	27 mm	9.69	6.89	1.10	0.25
6"	14.02	11.50	8.50	1.88	22.01	39.37	12- 1 1/8"	F12/F14	27 mm	11.81	7.68	1.10	0.25
8"	16.50	13.74	10.63	2.19	25.98	51.18	12- 1 1/4"	F14/F16	36 mm	14.76	9.65	1.42	0.25
10"	20.00	17.01	12.76	2.50	30.98	62.99	16- 1 1/8"	F14/F16	46 mm	18.74	10.43	1.81	0.25
12"	22.01	19.25	15.00	2.63	32.99	78.74	16- 1 1/4"	F14/F16	46 mm	21.89	11.02	1.81	0.25



4"-6"



1 1/2"-3"



Size	Torque
1/2"	150
3/4"	212
1"	354
1.25"	513
1.5"	797
2"	974
2.5"	1434
3"	2567
4"	3186
5"	4957
6"	7523
8"	15047
10"	24606
12"	37174

Size	CV
1/2"	24
3/4"	55
1"	95
1.25"	155
1.5"	260
2"	450
2.5"	710
3"	1100
4"	2100
5"	2900
6"	5400
8"	9500
10"	16000
12"	23000

No.	Part Name	Material
1	Bonnet	CF8/CF8M/WCB
2	Seat	PTFE/RPTFE
3	Ball	SS304/SS316
4	Gasket	PTFE/RPTFE
5	Stem Gasket	PTFE/RPTFE
6	O-Ring	Viton
7	Body	CF8/CF8M/WCB
8	Packing	PTFE
9	Packing Gland	SS304/SS316
10	Butterfly Spring	PH15-7Mo
11	Stem Nut	SS304/SS316
12	Packing Gland	SS304/SS316
13	Stop Pin	SS301
14	Nut	SS304
15	Handle	SS301
16	Handle Sleeve	Plastic
17	Thrust Washer	SS301
18	Stem	SS304/SS316
19	Anti-Static Device	SS304
20	Handle Lock	SS301
21	Pin	Plastic
22	Nut	A194 B8
23	Stud	A193 B8

Design & Manufacture	ANSI B16.34
Face to Face	ANSI B16.10
Flange Ends	ANSI B16.5
Inspection & Test	API598

VALVE	2 Pc. Flanged Ball Valve
PRESSURE	ANSI 600
CUSTOMER/PROJECT	
INQ./P.O. #	
ORDER #	
CERTIFIED BY	EDITED BY TZ

DIMENSIONAL DATA SHEET	
Series 64	
2 Pc. Flange Ball Valve	
With Direct Mounting Pad - ISO5211	
1/2" - 12"	

PART #	
DRAWING #	REVISION
64-0600	B
DATE	
03/06/2013	