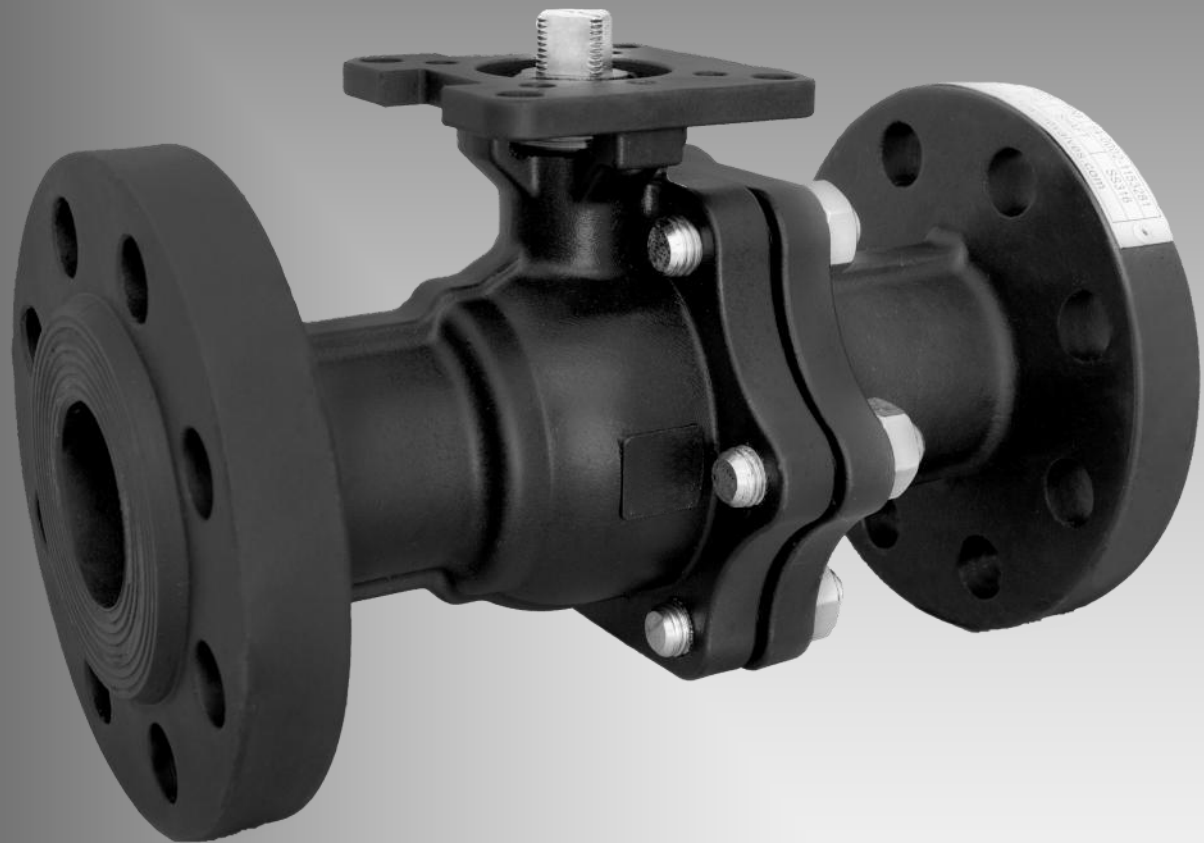


# Flow Line

# 64

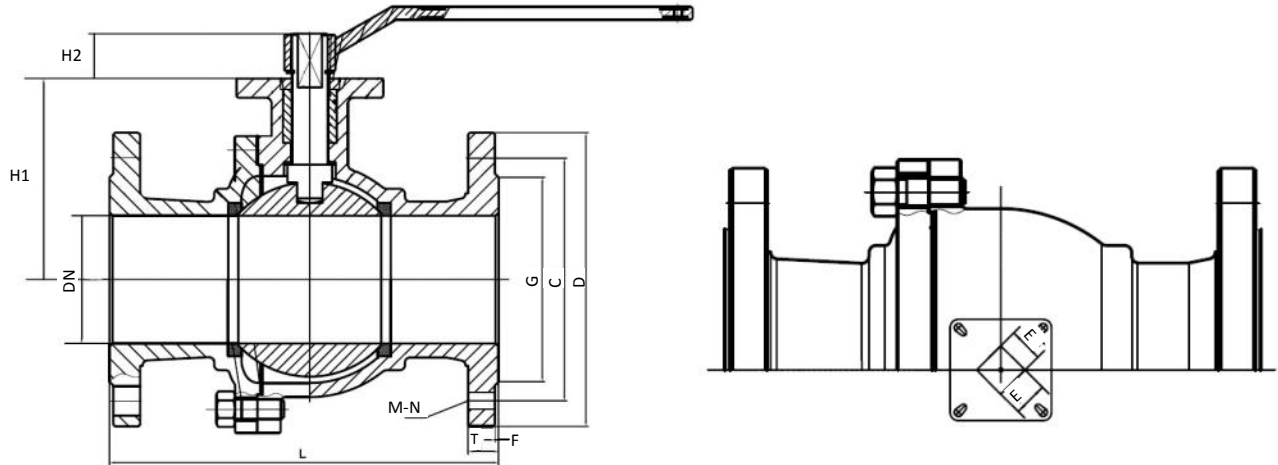


***ANSI Flanged Ball Valve with  
ISO 5211 Mounting***

**Sizes 1/2" - 12"**

# ENGINEERING

## DIMENSIONS



### ANSI 150

Size	D	C	G	T	E	F	M-N	L	H1	H2	ISIO 5211
1/2	3.50	2.38	1.38	0.44	0.35	0.06	4-16	4.25	1.91	0.31	F03/F04
3/4	3.86	2.76	1.69	0.44	0.35	0.06	4-16	4.61	2.11	0.31	F03/F04
1	4.25	3.13	2.01	0.47	0.43	0.06	4-16	5.00	2.50	0.39	F04/F05
1 1/4	4.61	3.50	2.52	0.50	0.43	0.06	4-16	5.51	2.80	0.39	F04/F05
1 1/2	5.00	3.88	2.87	0.56	0.55	0.06	4-16	6.50	3.05	0.55	F05/F07
2	5.98	4.74	3.62	0.63	0.55	0.06	4-19	7.01	3.35	0.55	F05/F07
2 1/2	7.01	5.49	4.13	0.69	0.67	0.06	4-19	7.48	3.94	0.63	F07/F10
3	7.50	6.00	5.00	0.75	0.67	0.06	4-19	7.99	4.33	0.63	F07/F10
4	9.02	7.50	6.18	0.94	0.75	0.06	8-19	9.02	5.12	0.71	F07/F10
5	10.00	8.50	7.32	0.94	0.87	0.06	8-22	14.02	6.50	0.91	F12/F14
6	10.98	9.51	8.50	1.00	1.06	0.06	8-22	15.51	7.48	1.10	F12/F14
8	13.50	11.75	10.63	1.13	1.06	0.06	8-22	17.99	9.13	1.10	F12/F14
10	15.98	14.25	12.76	1.19	1.42	0.06	12-25	20.98	10.04	1.42	F14/F16
12	19.02	17.01	15.00	1.25	1.81	0.06	12-25	24.02	10.63	1.81	F14/F16

### ANSI 300

Size	D	C	G	T	E	F	M-N	L	H1	H2	ISIO 5211
1/2	3.74	2.62	1.38	0.56	0.35	0.06	4-16	5.51	1.91	0.31	F03/F04
3/4	4.61	3.25	1.69	0.63	0.35	0.06	4-19	5.98	2.36	0.31	F03/F04
1	4.88	3.50	2.01	0.69	0.43	0.06	4-19	6.50	2.56	0.39	F04/F05
1 1/4	5.24	3.88	2.52	0.75	0.43	0.06	4-19	7.01	2.80	0.39	F04/F05
1 1/2	6.14	4.51	2.87	0.81	0.55	0.06	4-22	7.48	3.07	0.55	F05/F07
2	6.50	5.00	3.62	0.88	0.55	0.06	8-19	8.50	3.35	0.55	F05/F07
2 1/2	7.48	5.87	4.13	1.00	0.67	0.06	8-22	9.49	3.94	0.63	F07/F10
3	8.27	6.61	5.00	1.13	0.67	0.06	8-22	11.10	4.33	0.63	F07/F10
4	10.00	7.87	6.18	1.25	0.75	0.06	8-22	12.01	5.12	0.71	F07/F10
5	10.98	9.25	7.32	1.38	0.87	0.06	8-22	15.00	6.50	0.91	F12/F14
6	12.52	10.63	8.50	1.44	1.06	0.06	12-22	15.87	7.48	1.10	F12/F14
8	15.00	12.99	10.63	1.63	1.06	0.06	12-25	19.76	9.13	1.10	F12/F14
10	17.48	15.26	12.76	1.88	1.42	0.06	16-29	22.36	10.04	1.42	F14/F16
12	20.51	17.76	15.00	2.00	1.81	0.06	16-32	25.51	10.63	1.81	F14/F16

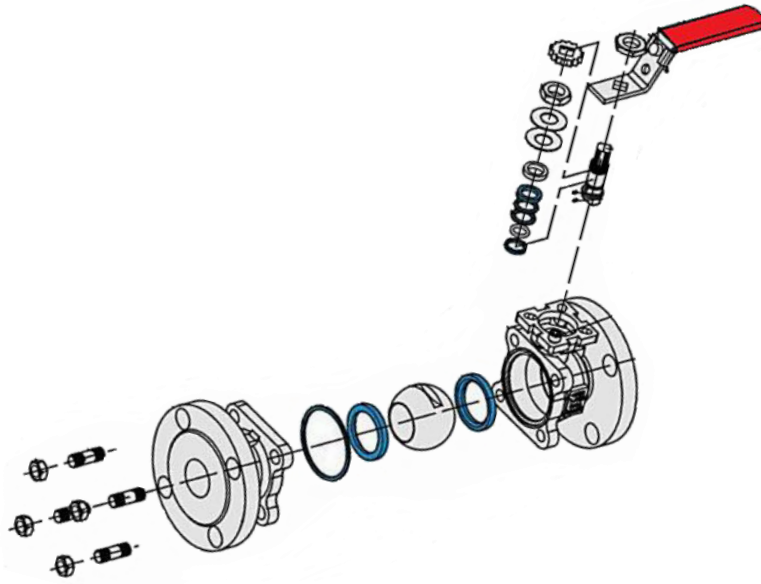
For additional information about Classes:

**ANSI 600 ANSI 900 ANSI 1500 ANSI 2500**

See our website at: [www.FlowLineValves.com](http://www.FlowLineValves.com)

# ENGINEERING

## MATERIALS OF CONSTRUCTION



Part	Material
Body	■ ASTM A351-CF8M
	■ ASTM A216-WCB
Cap	■ ASTM A351-CF8M
Ball	■ ASTM A351-CF8M
Seat	■ RTFE
Seal	■ PTFE
Thrust Washer	■ PTFE
Packing	■ PTFE
Stem	■ ASTM A276-316
Gland	■ ASTM A276-316
Locking Pad	■ ASTM A276-316
Gland Bolt	■ ASTM A276-316
Handle	■ ASTM A36 (A536)
Bolt	■ AISI 304

## TORQUE

Size	1/2"	3/4"	1"	1 1/4"	1 1/2"	2"	2 1/2"	3"	4"	5"	6"	8"	10"	12"
ANSI 150	53	89	142	212	283	443	664	841	1283	2832	3452	4957	9736	16728
ANSI 300	89	142	221	283	443	637	841	1416	2301	2832	4071	7523	11949	20800

- ◆ Torque chart is to be used as a guide only.
- ◆ These torque ratings do not apply to every possible service criteria, which may affect seating and unseating torque.
- ◆ Torque vales are applicable to Flow Line Series 70S.
- ◆ Do not apply a safety factor to the above torque values when sizing actuators.
- ◆ Dynamic Torque should always be a consideration when sizing valves with high differential pressures.

For additional information about Classes:  
**ANSI 600 ANSI 900 ANSI 1500 ANSI 2500**

See our website at: [www.FlowLineValves.com](http://www.FlowLineValves.com)

## CV VALUES

Size	1/2"	3/4"	1"	1 1/4"	1 1/2"	2"	2 1/2"	3"	4"	5"	6"	8"	10"	12"
Cv	24	55	95	155	260	450	710	1100	2100	2900	5400	9500	16000	23000

## How to Order

Series	Size	ANSI	Connection	Body	Ball/Shaft	Seat/Packing	Mounting	Operator		
1	2	3	4	5	6	7	8	9		
<b>1 Series</b>		<b>3 ANSI Class</b>		<b>5 Body</b>		<b>7</b>		<b>9 Operator</b>		
64	2 Piece Flanged, Floating Ball		1	150	3	316 SS	1	PTFE/PTFE	0	Less Handle
65	2 Piece Flanged, Trunnion Support		2	300	4	304 SS	2	RTFE/PTFE	1	Handle
<b>2 Valve Size</b>		<b>4 Valve Connection</b>		<b>6 Ball/Shaft</b>		<b>8 Mounting</b>		2	Gear Op	
0012	1/2"	0003	3"	3	600	5	216 WCB Carbon	3	Fire Safe	
0034	3/4"	0004	4"	5	900	<b>6 Ball/Shaft</b>		4	Devlon	
0001	1"	0005	5"	6	1500	3	316 SS	5	Peek	
0114	1 1/4"	0006	6"	7	2500	4	304 SS	<b>8 Mounting</b>		
0112	1 1/2"	0008	8"	<b>4 Valve Connection</b>		5	Alloy 20	7	Non-ISO	
0002	2"	0100	10"	1	Raised Face	<b>8 Mounting</b>		8	ISO Actuator Ready	
0025	2 1/2"	0120	12"	2	Ring Joint					

# ACTUATION



Series 21 spring return actuators are available throughout the size range.



Series 50 solenoid valves are available in 1/8", 1/4", and 1/2"NPT.



Series 52 and 53 limit switches provide local and remote valve position.



Series 55 and 56 positioners are available with either a 3-15 psi or 4-20 MADC signal.

## Applicable Standards

- Design ASME B16.34, API 608
- Face to Face ASME B16.10
- Wall Thickness ASME B16.34
- End Flange ASME B16.5
- Inspection & Testing API 598, API 6D



## Warranty

All products manufactured by Flow Line Valve and Controls, LLC. are warranted against defects in material and workmanship for a period of 2 years following the date of purchase.

All statements, technical information, and recommendations in the bulletin are for general use only. Flow Line Valve and Controls, LLC. is not responsible for suitability or compatibility of these products in relation to system requirements. Consult Flow Line Valve and Controls, LLC.'s distributors or factory for the specific requirements and material selection for your intended application. Flow Line Valve and Controls, LLC. reserves the right to change or modify product or product design without prior notice. Flow Line Valve and Controls, LLC. is not responsible for editorial or pictorial errors

# Flow Line

110 Main Project Rd. Schriever, LA 70395

Phone (985) 414-6004 Fax (985) 414-6072

Toll 800-815-9226

[www.flowlinevalves.com](http://www.flowlinevalves.com)

©Flow Line