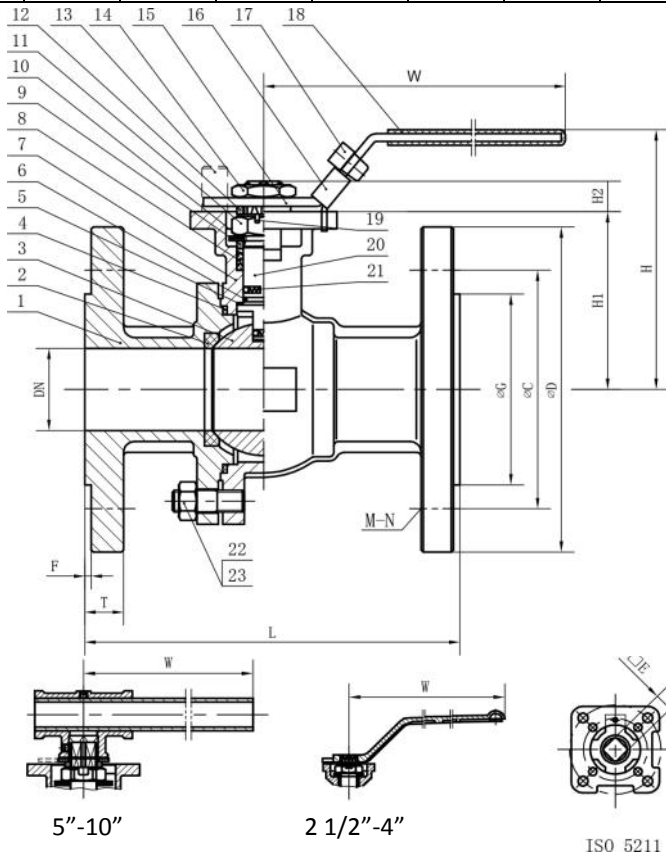


Size	D	C	G	T	L	W	N-M	ISO 5211	E	H	H1	H2	F
1/2"	3.50	2.38	1.38	0.44	4.25	4.72	4- 5/8"	F03/F04	9 mm	2.99	1.91	0.31	0.063
3/4"	3.86	2.76	1.69	0.44	4.61	4.72	4- 5/8"	F03/F04	9 mm	3.19	2.11	0.31	0.063
1"	4.25	3.13	2.01	0.47	5.00	6.30	4- 5/8"	F04/F05	11 mm	3.54	2.50	0.39	0.063
1 1/4"	4.61	3.50	2.52	0.50	5.51	6.30	4- 5/8"	F04/F05	11 mm	4.02	2.80	0.39	0.063
1 1/2"	5.00	3.88	2.87	0.56	6.50	7.28	4- 5/8"	F05/F07	14 mm	4.51	3.05	0.55	0.063
2"	5.98	4.74	3.62	0.63	7.01	7.28	4- 3/4"	F05/F07	14 mm	4.80	3.35	0.55	0.063
2 1/2"	7.01	5.49	4.13	0.69	7.48	9.84	4- 3/4"	F07/F10	17 mm	6.61	3.94	0.63	0.063
3"	7.50	6.00	5.00	0.75	7.99	9.84	4- 3/4"	F07/F10	17 mm	7.01	4.33	0.63	0.063
4"	9.02	7.50	6.18	0.94	9.02	12.20	8- 3/4"	F07/F10	19 mm	7.80	5.12	0.71	0.063
5"	10.00	8.50	7.32	0.94	14.02	19.69	8- 3/4"	F12/F14	22 mm	9.21	6.50	0.91	0.063
6"	10.98	9.51	8.50	1.00	15.51	25.39	8- 7/8"	F12/F14	27 mm	10.31	7.48	1.10	0.063
8"	13.50	11.75	10.63	1.13	17.99	33.46	8- 7/8"	F12/F14	27 mm	11.97	9.13	1.10	0.063
10"	15.98	14.25	12.76	1.19	20.98	47.24	12- 1"	F14/F16	36 mm	14.29	10.04	1.42	0.063
12"	19.02	17.01	15.00	1.25	24.02	62.99	12- 1"	F14/F16	46 mm	18.03	10.63	1.81	0.063



Size	Torque
1/2"	53
3/4"	89
1"	142
1.25"	212
1.5"	283
2"	443
2.5"	664
3"	841
4"	1283
5"	2832
6"	3452
8"	4957
10"	9736
12"	16728

Size	CV
1/2"	24
3/4"	55
1"	95
1.25"	155
1.5"	260
2"	450
2.5"	710
3"	1100
4"	2100
5"	2900
6"	5400
8"	9500
10"	16000
12"	23000

No.	Part Name	Material
1	Bonnet	CF8/CF8M/WCB
2	Seat	PTFE/RPTFE
3	Ball	SS304/SS316
4	Gasket	PTFE/RPTFE
5	Stem Gasket	PTFE/RPTFE
6	O-Ring	Viton
7	Body	CF8/CF8M/WCB
8	Packing	PTFE
9	Packing Gland	SS304/SS316
10	Butterfly Spring	PH15-7Mo
11	Stem Nut	SS304/SS316
12	Packing Gland	SS304/SS316
13	Stop Pin	SS301
14	Nut	SS304
15	Handle	SS301
16	Handle Sleeve	Plastic
17	Thrust Washer	SS301
18	Stem	SS304/SS316
19	Anti-Static Device	SS304
20	Handle Lock	SS301
21	Pin	Plastic
22	Nut	A194 B8
23	Stud	A193 B8
Design & Manufacture		ANSI B16.34
Face to Face		ANSI B16.10
Flange Ends		ANSI B16.5
Inspection & Test		API598

VALVE	2 Pc. Flanged Ball Valve	
PRESSURE	ANSI 150	
CUSTOMER/PROJECT		
INQ./P.O. #		
ORDER #		
CERTIFIED BY	EDITED BY	TZ

<b>DIMENSIONAL DATA SHEET</b> Series 64 2 Pc. Flanged Ball Valve With Direct Mounting Pad - ISO5211 1/2" - 12"	
--	--

PART #	
DRAWING #	REVISION
64-0150	B
DATE	
03/05/2013	