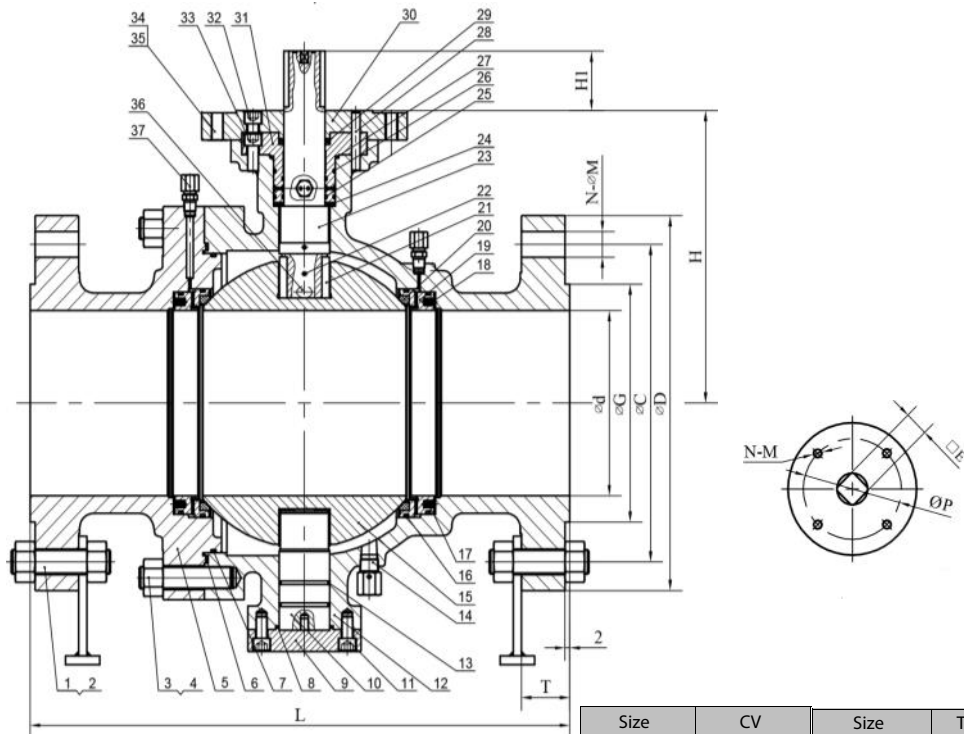


Size	D	C	G	T	L	P	N-M	ISO 5211	E	H	H1	N-M
2"	6.50	5.00	3.62	1.00	11.50	2.76	4- M8	F07	17 mm	5.12	0.67	8- 3/4"
2.5"	7.48	5.87	4.13	1.13	12.99	4.02	4- M10	F10	19 mm	6.89	0.75	8- 7/8"
3"	8.27	6.61	5.00	1.25	14.02	4.02	4- M10	F10	19 mm	7.72	0.75	8- 7/8"
4"	10.75	8.50	6.18	1.50	17.01	4.92	4- M12	F12	22 mm	8.46	0.87	8- 1"
5"	12.99	10.46	7.35	1.77	20.00	4.92	4- M12	F12	27 mm	11.02	1.10	8- 1 1/8"
6"	14.02	11.50	8.50	1.88	22.01	5.51	4- M16	F14	27 mm	12.44	1.06	12- 1 1/8"
8"	16.50	13.74	10.63	2.19	25.98	6.50	4- M20	F16	36 mm	15.08	1.42	12- 1 1/4"
10"	20.00	17.01	12.76	2.50	30.98	6.50	4- M20	F16	46 mm	19.29	1.81	16- 1 3/8"
12"	22.01	19.25	15.00	2.63	32.99	10.00	8- M16	F25	46 mm	22.64	1.81	20- 1 3/8"



No	Part Name	Material
1	Bolt	ASTM A193 B7
2	Nut	ASTM A194 2H
3	Bolt	ASTM A193 B7
4	Nut	ASTM A194 2H
5	Cap	ASTM A216
6	Body Gasket	Graphite +
7	O-Ring	Viton
8	Bottom Cover Gas-	Graphite
9	Bottom Cover	ASTM A105
10	Fixed Axis	ASTM A276
11	Screw	ASTM A193 B7
12	Body	ASTM A216
13	O-Ring	Viton
14	Drain Valve	
15	Ball	ASTM A182
16	O-Ring	Viton
17	Spring	17-7PH
18	O-Ring	Viton
19	Seat Support Ring	ASTM A182
20	Seat	RPTFE
21	Key	ASTM A194 2H
22	Anti-Static Device	ASTM A276
23	Stem	ASTM A276
24	Thrust Washers	ASTM A276
25	Pin	ASTM A194 2H
26	Packing	Graphite
27	Packing Gland	Graphite
28	Pin	ASTM A194 2H
29	Packing	Graphite
30	Turbine	
31	Packing Gland	ASTM A105
32	Key	ASTM A194 2H
33	Stem Gland	ASTM A276
34	Screw	ASTM A193 B7
35	Screw	ASTM A193 B7
36	Bolt	ASTM A193 B7
37	Nut	ASTM A194 2H

Size	CV	Size	Torque
2"	460	2"	620
2 1/2"	710	2 1/2"	974
3"	1000	3"	2301
4"	2100	4"	2965
5"	2900	5"	4735
6"	5300	6"	6904
8"	9500	8"	14604
10"	16000	10"	23721
12"	23000	12"	37174

Design & Manufacture	ANSI B16.34
Face to Face	ANSI B16.10
Flange Ends	ANSI B16.5
Inspection & Test	API598

VALVE		PART #	
Trunnion Flange Ball Valve			
PRESSURE		DRAWING #	
ANSI 600		65-0600	
CUSTOMER/PROJECT		REVISION	
INQ./P.O. #		B	
ORDER #		DATE	
CERTIFIED BY		03/05/2013	
JD	EDITED BY		
	TZ		

DIMENSIONAL DATA SHEET

Series 65  
Trunnion Flanged Ball Valve  
2" - 12"

Flow Line Valve and Controls, LLC

P.O. Box 677 · 110 Main Project Road · Schriever LA 70395 · Phone (985) 414-6004 · Fax (985) 414 -6072

www.flowlinevalves.com