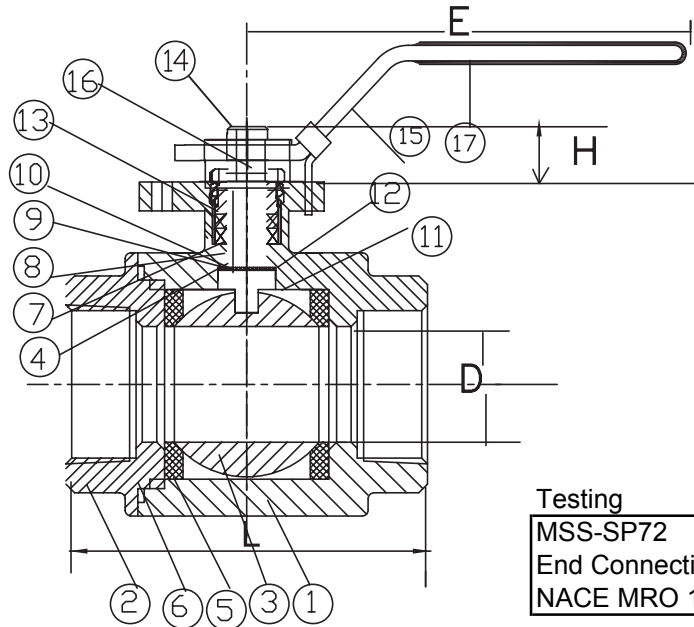
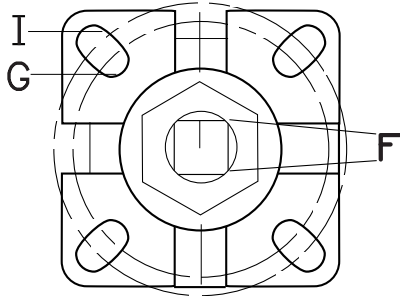


**Dimensions - ISO Mounting**

Size	1/4"	3/8"	1/2"	3/4"	1"	1 1/4"	1 1/2"	2"	2 1/2"	3"	4"
L	2.36	2.36	2.36	2.68	3.19	3.78	4.06	4.77	6.26	7.36	8.78
F	9mm	9mm	9mm	9mm	11mm	11mm	14mm	14mm	17mm	17mm	17mm
D	.46	.50	.59	.79	.98	1.26	1.50	1.97	2.56	3.15	3.94
H	.35	.35	.35	.35	.47	.55	.55	.55	.67	.67	.67
E	5.47	5.47	5.47	6.5	6.5	.65	8.46	8.46	10.12	10.12	12.06
G	F03	F03	F03	F03	F04	F04	F05	F05	F07	F07	F07
I	-	-	F04	F04	F05	F05	F07	F07	F10	F10	F10



**Materials**

1	Body	304SS/316SS/216WCB
2	End Cap	304SS/316SS/216WCB
3	Ball	304SS/316SS
4	Stem	304SS/316SS
5	Ball Seat	RTFE/PTFE
6	Gasket	RTFE/PTFE
7	Stem Packing	RTFE/PTFE
8	Thrust Washer	RTFE/PTFE
9	Stem Packing	304SS
10	Belleville Washer	304SS
11	Thrust Washer	RTFE/PTFE
12	O-ring	Viton
13	Locking Washer	304SS
14	Stem Nut	304SS
15	Handle	304SS
16	Handle Nut	304SS
17	Handle Cover	Vinyl

**Testing**

MSS-SP72  
 End Connection  
 NACE MRO 175

**Torque in/lbs**

Size	1000lb
1/4"	27
3/8"	36
1/2"	54
3/4"	80
1"	124
1 1/4"	195
1 1/2"	284
2"	355
2 1/2"	532
3"	797
4"	1151

Size	Weights	Cv
1/4"	0.46	10
3/8"	0.46	18
1/2"	1.08	24
3/4"	1.65	55
1"	2.42	100
1 1/4"	3.63	160
1 1/2"	4.95	260
2"	7.59	450
2 1/2"	14.19	720
3"	21.67	1100
4"	41.69	2200

VALVE SIZE	
PRESSURE RATING	
CUSTOMER/PROJECT	
INQ/PO NO.	
ORDER NO.	
CERTIFIED BY	DATE

**DIMENSIONAL DATA SHEET**

**BALL VALVE**  
**SERIES 61 DM**  
**SIZES 1/4" - 4"**

PART NO.	
DRAWING NO.	REV
FL61DM-002	A
DATE	
7/09	