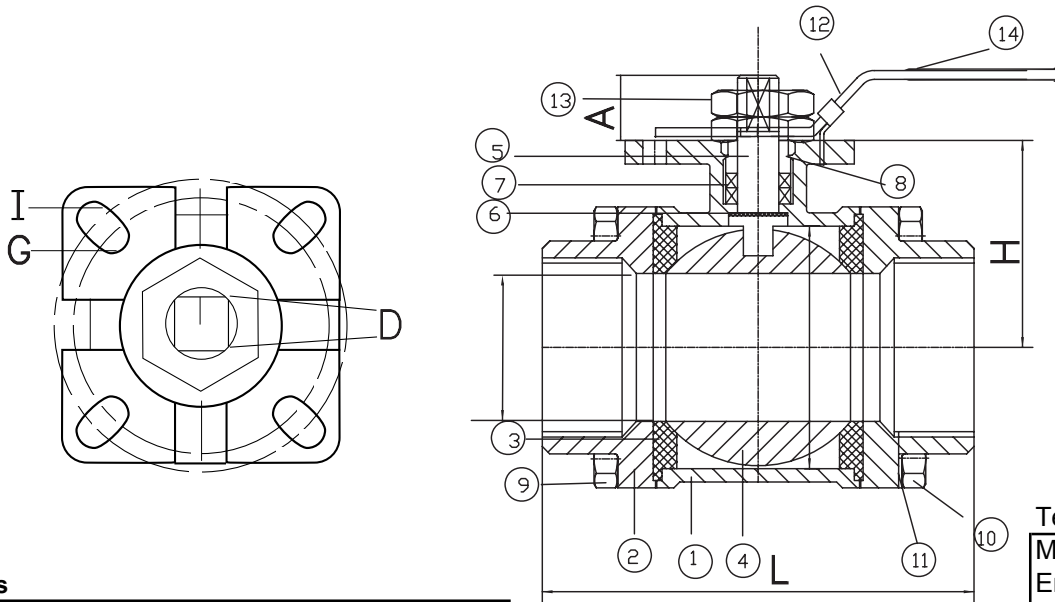


**Dimensions - ISO Mounting**

| Size | 1/4" | 3/8" | 1/2" | 3/4" | 1"   | 1 1/4" | 1 1/2" | 2"   | 2 1/2" | 3"   | 4"    |
|------|------|------|------|------|------|--------|--------|------|--------|------|-------|
| A    | 0.35 | 0.35 | 0.47 | 0.47 | 0.55 | 0.55   | 0.55   | 0.67 | 0.67   | 0.67 | 0.79  |
| L    | 2.56 | 2.56 | 2.91 | 3.35 | 3.58 | 4.41   | 4.72   | 5.71 | 6.69   | 8.19 | 10.47 |
| H    | 1.42 | 1.42 | 1.42 | 1.61 | 1.77 | 2.17   | 2.56   | 2.91 | 4.33   | 4.80 | 5.67  |
| D    | 9mm  | 9mm  | 9mm  | 9mm  | 11mm | 11mm   | 14mm   | 14mm | 17mm   | 17mm | 17mm  |
| G    | F03  | F03  | F03  | F03  | F04  | F04    | F05    | F05  | F07    | F07  | F07   |
| I    | F04  | F04  | F04  | F04  | F05  | F05    | F07    | F07  | F10    | F10  | F10   |



Testing  
MSS-SP72  
End Connection  
NACE MRO 175

**Materials**

|    |               |                    |
|----|---------------|--------------------|
| 1  | Body          | 304SS/316SS/216WCB |
| 2  | End Caps      | 304SS/316SS/216WCB |
| 3  | Seats         | RTFE/PTFE          |
| 4  | Ball          | 304SS/316SS        |
| 5  | Stem          | 304SS/316SS        |
| 6  | Gasket        | 304SS              |
| 7  | Seal          | PTFE               |
| 8  | Lever Nut     | 304SS              |
| 9  | Bolts         | 304SS              |
| 10 | Bolt Nuts     | 304SS              |
| 11 | Spring Washer | 304SS              |
| 12 | Handle        | 304SS              |
| 13 | Handle Nut    | 304SS              |
| 14 | Handle Cover  | Vinyl              |

**Torque in/lbs**

| Size   | 1000lb |
|--------|--------|
| 1/4"   | 27     |
| 3/8"   | 36     |
| 1/2"   | 54     |
| 3/4"   | 80     |
| 1"     | 124    |
| 1 1/4" | 195    |
| 1 1/2" | 284    |
| 2"     | 355    |
| 2 1/2" | 532    |
| 3"     | 797    |
| 4"     | 1151   |

| Size   | Weight | Cv   |
|--------|--------|------|
| 1/4"   | 1      | 10   |
| 3/8"   | 1      | 18   |
| 1/2"   | 1.1    | 24   |
| 3/4"   | 1.98   | 55   |
| 1"     | 2.64   | 100  |
| 1 1/4" | 3.96   | 160  |
| 1 1/2" | 5.5    | 260  |
| 2"     | 8.8    | 450  |
| 2 1/2" | 15.18  | 720  |
| 3"     | 25.96  | 1100 |
| 4"     | 50.82  | 2200 |

| VALVE SIZE       |  | DIMENSIONAL DATA SHEET  |  | PART NO.    |  |
|------------------|--|---|--|-------------|--|
| PRESSURE RATING  |  | <p align="center"><b>BALL VALVE</b></p> <p align="center"><b>SERIES 62</b></p> <p align="center"><b>SIZES 1/4" - 4"</b></p> |  | DRAWING NO. |  |
| CUSTOMER/PROJECT |  |   |  | FL62-002    |  |
| INQ/PO NO.       |  |   |  | REV         |  |
| ORDER NO.        |  |   |  | A           |  |
| CERTIFIED BY     |  |   |  | DATE        |  |
| DATE             |  | 7/09  |  |             |  |