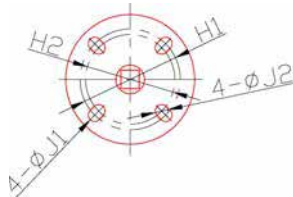
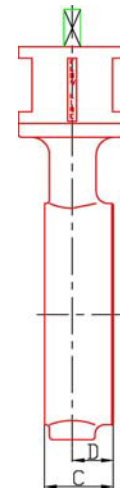
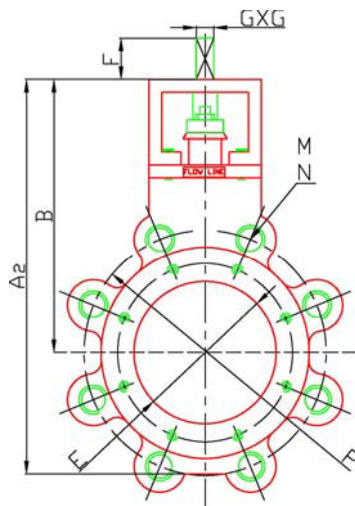


## PTFE / RTFE Seat

Size	A2	B	C	D	E	F	GxG	H1	H2	J1	J2	M	N	P	Wt
2"	9.42	6.42	1.75	1.06	2.45	0.827	0.551	3.25	2.76	0.41	0.39	5/8"-11	4	4.75	12
2.5"	9.13	6.42	1.88	1.09	2.91	0.827	0.551	3.25	2.76	0.41	0.39	5/8"-11	4	5.5	13
3"	10.43	7.4	1.92	1.2	3.37	0.827	0.551	3.25	2.76	0.41	0.39	5/8"-11	4	6	15
4"	11.73	8.23	2.13	1.26	4.25	0.827	0.551	3.25	2.76	0.41	0.39	5/8"-11	8	7.5	24
5"	13.95	9.07	2.25	1.34	5.3	1.063	0.67	3.25	2.76	0.41	0.39	3/4"-10	8	8.5	29
6"	14.5	9.6	2.31	1.38	6.4	1.063	0.67	3.25	2.76	0.41	0.39	3/4"-10	8	9.5	37
8"	16.76	10.75	2.5	1.49	8.35	1.063	0.866	5	4.02	0.53	0.53	3/4"-10	8	11.75	64
10"	19.26	11.36	2.81	1.7	10.16	1.063	0.866	5	4.02	0.53	0.53	7/8"-9	12	14.25	84
12"	23.91	14.37	3.23	1.86	11.93	1.063	0.866	5	4.02	0.53	0.53	7/8"-9	12	17	142



4	stem		
3	disc		
2	seat		
1	body		
Item	Description	Material	Remarks

VALVE SIZE	Lug	<b>DIMENSIONAL DATA SHEET</b> <b>HIGH PERFORMANCE BUTTERFLY</b> <b>VALVE</b> <b>PTFE/RTFE Seat</b> <b>SERIES 77</b> <b>SIZES 2"-12"</b>		PART NO.		
PRESSURE RATING	ANSI 150			DRAWING NO.		REV
CUSTOMER/PROJECT				77-0001		A
INQ./PO NO.				DATE		
ORDER NO.				8/5/10		
CERTIFIED BY	DATE					

### Flow Line Valve and Controls, L.L.C.