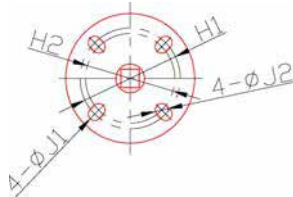
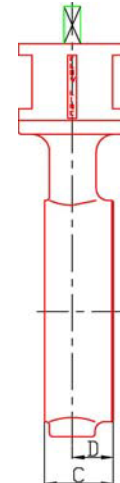
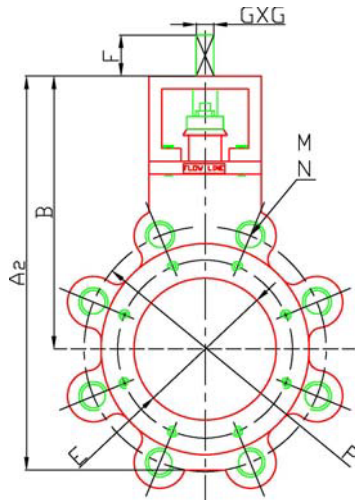


PTFE / RTFE Seat

Size	A2	B	C	D	E	F	GxG	H1	H2	J1	J2	M	N	P	Wt
2"	9.37	6.42	1.75	1.06	2.45	0.827	0.551	3.25	2.76	0.41	0.39	5/8"-11	8	5	15
2.5"	9.13	6.42	1.88	1.09	2.91	0.827	0.551	3.25	2.76	0.41	0.39	3/4"-10	8	5.88	17
3"	10.47	7.4	1.92	1.2	3.37	0.827	0.551	3.25	2.76	0.41	0.39	3/4"-10	8	6.625	20
4"	11.93	8.23	2.13	1.26	4.25	0.827	0.551	3.25	2.76	0.41	0.39	3/4"-10	8	7.875	27
5"	13.43	9.07	2.25	1.34	5.3	1.063	0.67	3.25	2.76	0.41	0.39	3/4"-10	8	9.25	34
6"	14.53	9.61	2.29	1.38	6.4	1.063	0.67	5	4.02	0.53	0.53	3/4"-10	12	10.63	50
8"	17.92	10.76	2.88	1.54	8.35	1.063	0.866	5	4.02	0.53	0.53	7/8"-9	12	13	78
10"	19.74	11.88	3.25	1.7	10.16	1.063	0.866	5	4.02	0.53	0.53	1"-8	16	15.25	110
12"	24.55	14.74	3.62	1.86	11.93	1.063	0.866	5	4.02	0.53	0.53	1 1/8"-8	16	17.75	148



4	stem		
3	disc		
2	seat		
1	body		
Item	Description	Material	Remarks

VALVE SIZE	Lug	DIMENSIONAL DATA SHEET HIGH PERFORMANCE BUTTERFLY VALVE PTFE/RTFE Seat SERIES 77 SIZES 2"-12"	PART NO.	
PRESSURE RATING	ANSI 300		DRAWING NO.	REV
CUSTOMER/PROJECT			77-0003	A
INQ./PO NO.			DATE	
ORDER NO.			8/5/10	
CERTIFIED BY	DATE			

Flow Line Valve and Controls, L.L.C.