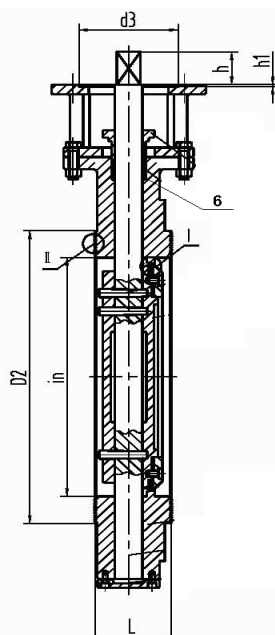
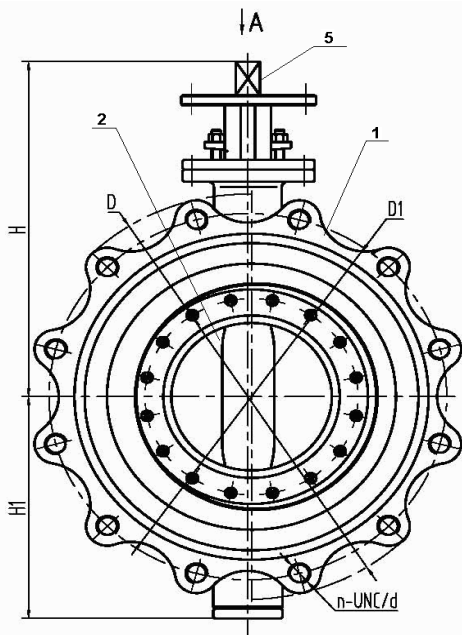
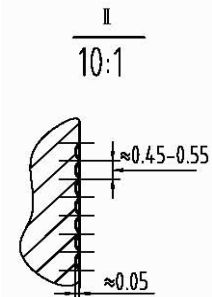
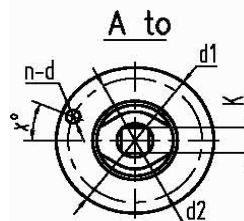
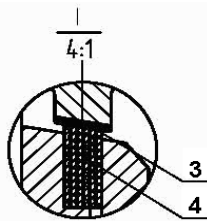


Size	L	D	D1	D2	4-UNC	H	H1	h	K	ISO5211	d1	d2	d3	h1
2"	1.69	5.98	4.74	3.62	4-5/8"-11UNC	8.58	4.25	1.77	14mm	F07	3.54	2.76	2.17	0.12
2.5"	1.81	7.01	5.49	4.13	4-5/8"-11UNC	8.98	4.65	1.77	14mm	F07	3.54	2.76	2.17	0.12
3"	1.89	7.48	6	5	4-5/8"-11UNC	9.29	4.96	1.77	14mm	F07	3.54	2.76	2.17	0.12
4"	2.13	9.02	7.5	6.18	8-5/8"-11UNC	11.22	4.82	1.77	14mm	F07	3.54	2.76	2.17	0.12
5"	2.2	10	8.5	7.32	8-3/4"-10UNC	13.46	5.51	2.56	19mm	F10	4.92	4.02	2.76	0.12
6"	2.24	10.98	9.51	8.5	8-3/4"-10UNC	14.06	6.1	2.56	19mm	F10	4.92	4.02	2.76	0.12
8"	2.52	13.5	11.75	10.63	8-3/4"-10UNC	16.93	7.28	3.35	27mm	F12/F10	5.91	4.92/4.02	-	-
10"	2.8	15.98	14.25	12.76	12-7/8"-9UNC	18.15	10.75	3.35	27mm	F12/F10	5.91	4.92/4.02	-	-
12"	3.19	19.02	17.01	15	12-7/8"-9UNC	20.87	12.13	4.33	36mm	F16/F12	8.27	6.5/4.92	-	-



No.	Item	Material	Optional
1	Body	WCB/316SS/304SS	Duplex
2	Disc	316SS/304SS	Stellite/Duplex
3	Seat	.13Cr	Stellite
4	Seat Ring	316SS+Graphoil	Stellite+Graphoil/ 304SS+Graphoil/ .13Cr+Graphoil
5	Shaft	17-4PhSS	316SS/Monel
6	Packing	Graphoil	Consult Factory
7	Bearings	SS+Nitrate	Consult Factory

Design	API 607 6th Edition		
Flange	ANSI B16.5		
Test	API 598		
Torque In-lbs			
2"	310	6"	2567
2.5"	425	8"	5134
3"	690	10"	7966
4"	1080	12"	12922
5"	1655		



VALVE	Lug Torque Seated	DIMENSIONAL DATA SHEET Series 78 Lug Torque Seated Triple Offset Butterfly Valve Size 2"----12"	PART NO.	
PRESSURE RATING	ANSI 150		DRAWING NO.	REV
CUSTOMER/PROJECT			FL78-2150	A
SPECIFICATION	API 607 6th Edition		DATE	
CERTIFIED BY	J.D.		12/15/2012	