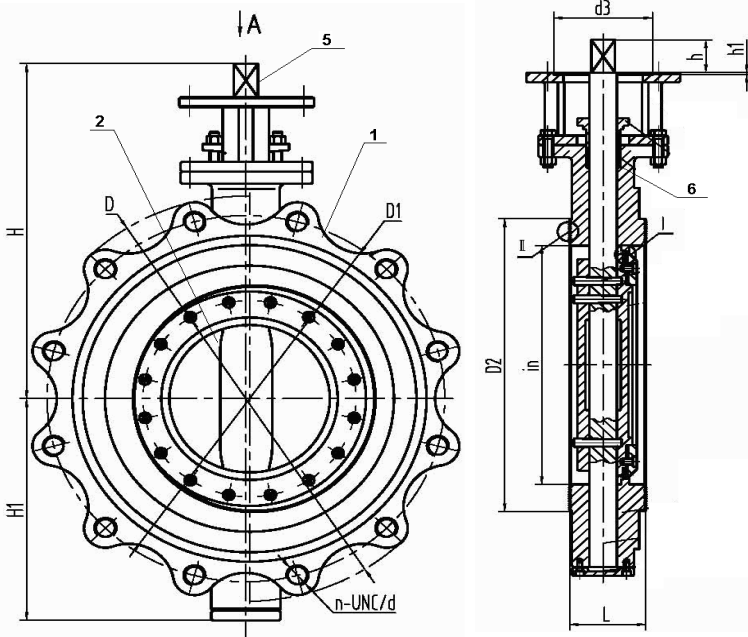
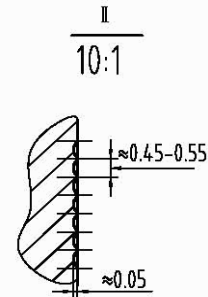
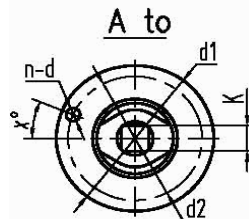
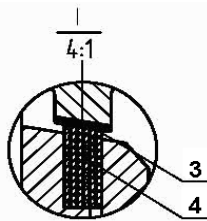


Size	L	D	D1	D2	4-UNC	H	H1	h	K	ISO5211	d1	d2	d3	h1
4"	1.69	5.98	4.74	3.62	4-Ø.71	8.58	4.25	1.77	14mm	F07	3.54	2.76	2.17	0.12
5"	1.81	7.01	5.49	4.13	4-Ø.71	8.98	4.65	1.77	14mm	F07	3.54	2.76	2.17	0.12
6"	1.89	7.48	6	5	4-Ø.71	9.29	4.96	1.77	14mm	F07	3.54	2.76	2.17	0.12
8"	2.13	9.02	7.5	6.18	8-5/8-11UNC	11.22	4.82	1.77	14mm	F07	3.54	2.76	2.17	0.12
10"	2.2	10	8.5	7.32	8-3/4-10UNC	13.46	5.51	2.56	19mm	F10	4.92	4.02	2.76	0.12
12"	2.24	10.98	9.51	8.5	8-3/4-10UNC	14.06	6.1	2.56	19mm	F10	4.92	4.02	2.76	0.12



No.	Item	Material	Optional
1	Body	WCB/316SS/304SS	Duplex
2	Disc	316SS/304SS	Stellite/Duplex
3	Seat	.13Cr	Stellite
4	Seat Ring	316SS+Graphoil	Stellite+Graphoil/ 304SS+Graphoil/ .13Cr+Graphoil
5	Shaft	17-4PhSS	316SS/Monel
6	Packing	Graphoil	Consult Factory
7	Bearings	SS+Nitrate	Consult Factory

<b>Design</b>	API 607 6th Edition		
<b>Flange</b>	ANSI B16.5		
<b>Test</b>	API 598		
<b>Torque In-lbs</b>			
<b>4"</b>	2,089	<b>8"</b>	10,179
<b>5"</b>	3,399	<b>10"</b>	17,313
<b>6"</b>	4,691	<b>12"</b>	25978



VALVE	Lug Torque Seated	<b>DIMENSIONAL DATA SHEET</b>  <b>Series 78</b> <b>Lug Torque Seated Triple Offset Butterfly Valve</b>  <b>Size 4"----12"</b>		PART NO.	
PRESSURE RATING	ANSI 300			DRAWING NO.	REV
CUSTOMER/PROJECT				FL78-2300	A
SPECIFICATION	API 607 6th Edition			DATE	
CERTIFIED BY	J.D.			12/15/2011	