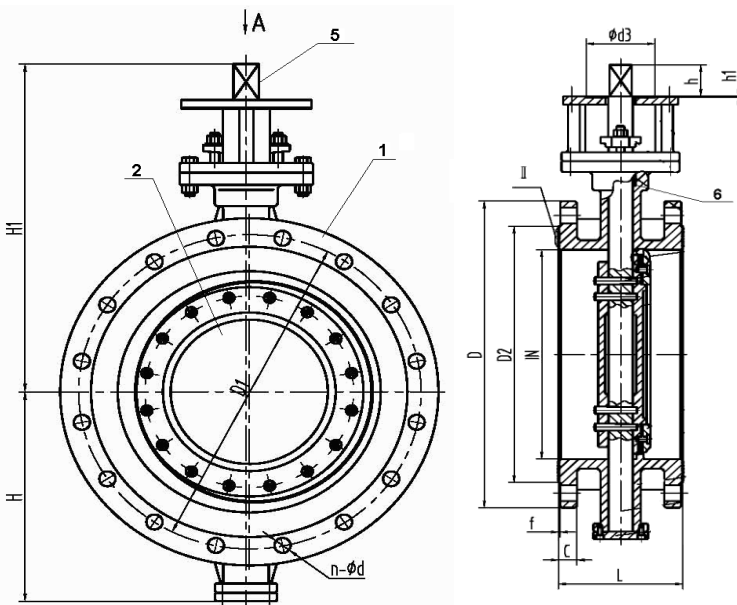
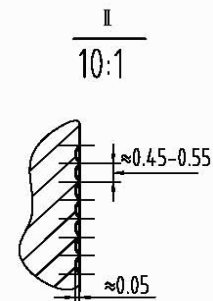
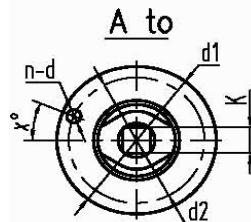
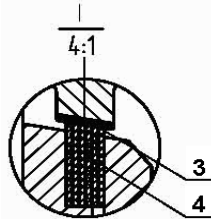


Size	L	D	D1	D2	n-Ød	H	H1	h	K	ISO5211	d1	d2	d3	h1
2"	4.25	5.98	4.74	3.62	4-Ø.71	4.25	8.58	1.77	14mm	F07	3.54	2.76	2.17	0.12
2.5"	4.41	7.01	5.49	4.13	4-Ø.71	4.65	8.98	1.77	14mm	F07	3.54	2.76	2.17	0.12
3"	4.49	7.48	6	5	4-Ø.71	4.96	9.29	1.77	14mm	F07	3.54	2.76	2.17	0.12
4"	5	9.02	7.5	6.18	8-Ø.71	4.82	11.22	1.77	14mm	F07	3.54	2.76	2.17	0.12
5"	5.51	10	8.5	7.32	8-Ø.87	5.51	13.46	2.56	19mm	F10	4.92	4.02	2.76	0.12
6"	5.51	10.98	9.51	8.5	8-Ø.87	6.1	14.06	2.56	19mm	F10	4.92	4.02	2.76	0.12
8"	5.98	13.5	11.75	10.63	8-Ø.87	7.28	16.93	3.35	27mm	F12/F10	5.91	4.92/4.02	-	-
10"	6.5	15.98	14.25	12.76	12-Ø1.02	10.75	18.15	3.35	27mm	F12/F10	5.91	4.92/4.02	-	-
12"	7.01	19.02	17.01	15	12-Ø1.02	12.13	20.87	4.33	36mm	F16/F12	8.27	6.5/4.92	-	-



No.	Item	Material	Optional
1	Body	WCB/316SS/304SS	Duplex
2	Disc	316SS/304SS	Stellite/Duplex
3	Seat	.13Cr	Stellite
4	Seat Ring	316SS+Graphoil	Stellite+Graphoil/ 304SS+Graphoil/ .13Cr+Graphoil
5	Shaft	17-4PhSS	316SS/Monel
6	Packing	Graphoil	Consult Factory
7	Bearings	SS+Nitrate	Consult Factory

<b>Design</b>	API 607 6th Edition		
<b>Flange</b>	ANSI B16.5		
<b>Test</b>	API 598		
<b>Torque In-lbs</b>			
<b>2"</b>	310	<b>6"</b>	2567
<b>2.5"</b>	425	<b>8"</b>	5134
<b>3"</b>	690	<b>10"</b>	7966
<b>4"</b>	1080	<b>12"</b>	12922
<b>5"</b>	1655		



VALVE	Flanged Torque Seated Triple Offset
PRESSURE RATING	ANSI 150
CUSTOMER/PROJECT	
SPECIFICATION	API 607 6th Edition
CERTIFIED BY	J.D.

<b>DIMENSIONAL DATA SHEET</b>
<b>Series 78</b>
<b>Flanged Torque Seated Triple Offset Butterfly Valve</b>
<b>Size 2"----12"</b>

PART NO.	
DRAWING NO. FL78-3150	REV A
DATE 12/15/2011	